

TIMO SILDVEE

---

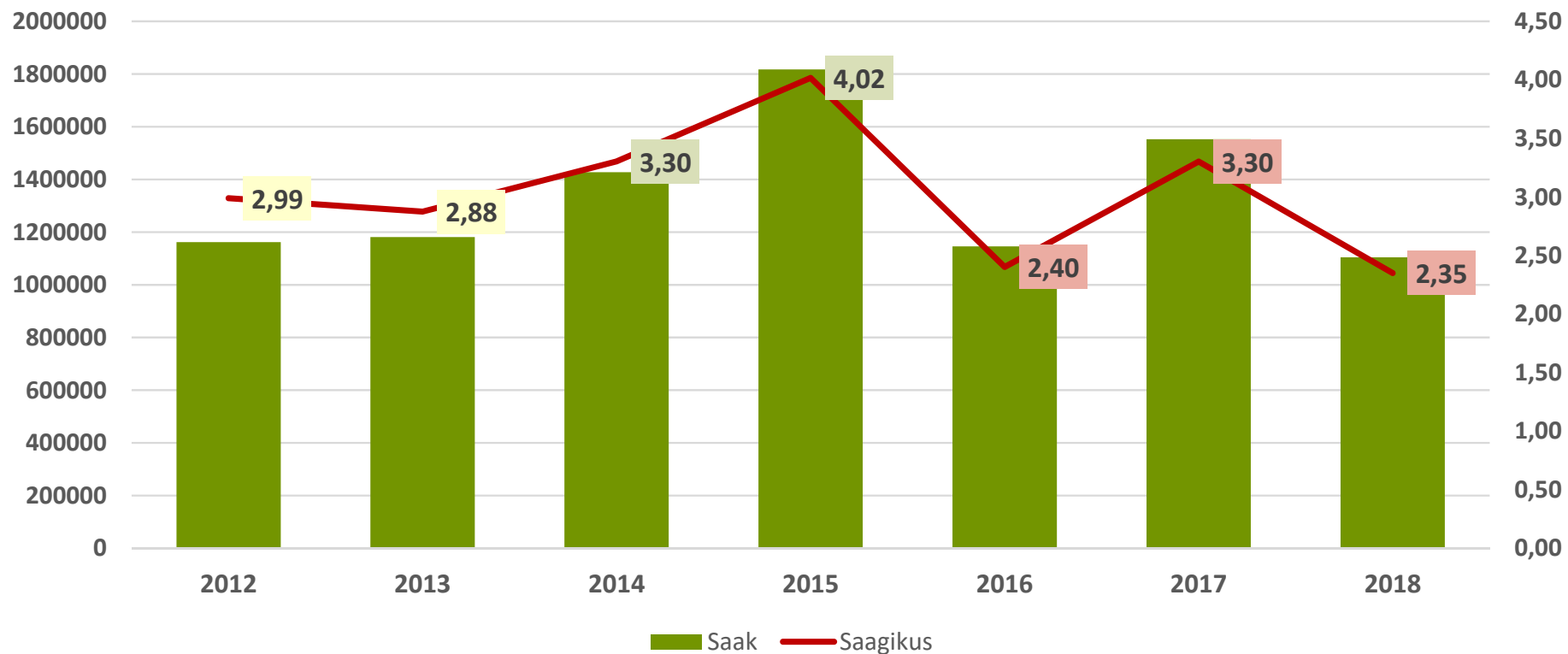
Timo.Sildvee@balticagroestonia.com



*Cultivating Value*



# EESTI SAAK JA SAAGIKUS 2012 - 2018



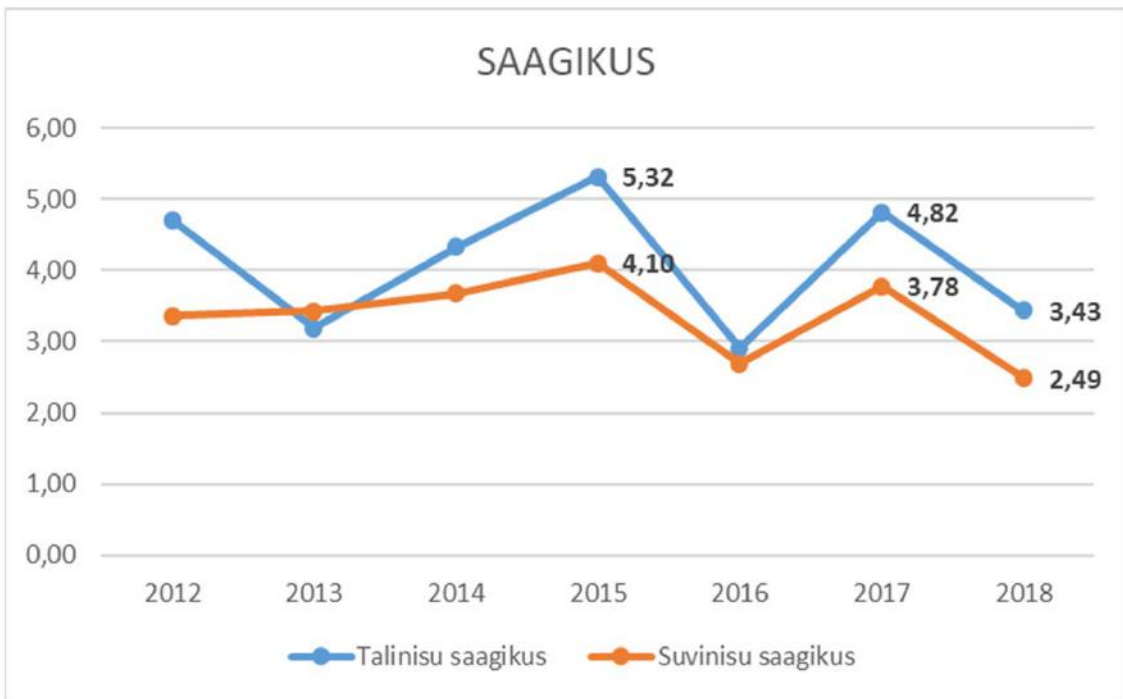
*Cultivating Value*



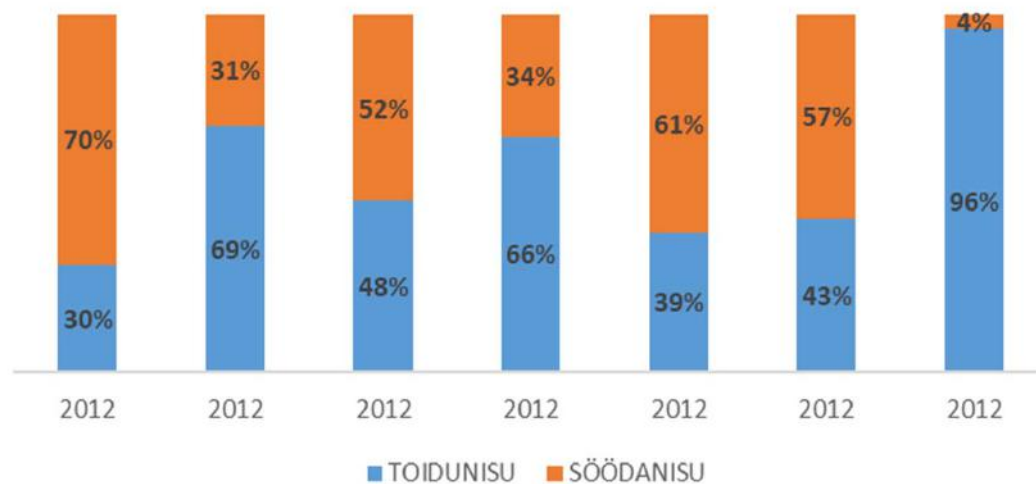
# NISU

<b>Proteiin</b>	<b>14,80</b>
<b>Mahukaal</b>	<b>796</b>
<b>Langemine</b>	<b>269</b>
<b>Niiskus</b>	<b>12,67</b>
<b>Prügisus</b>	<b>0,73</b>

SAAGIKUS



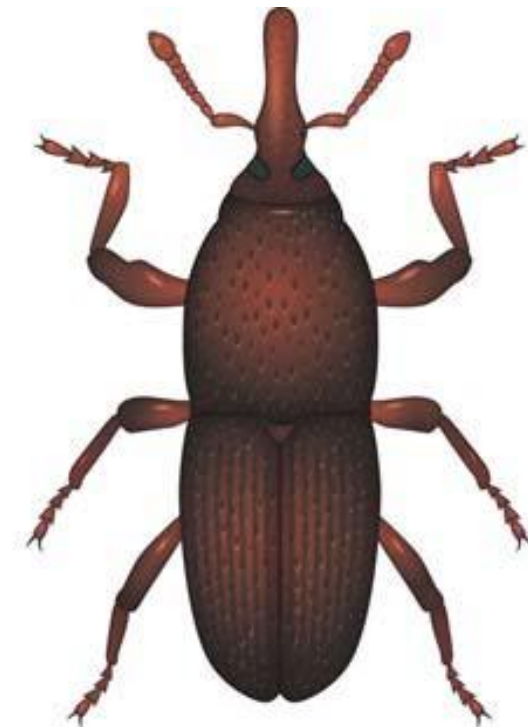
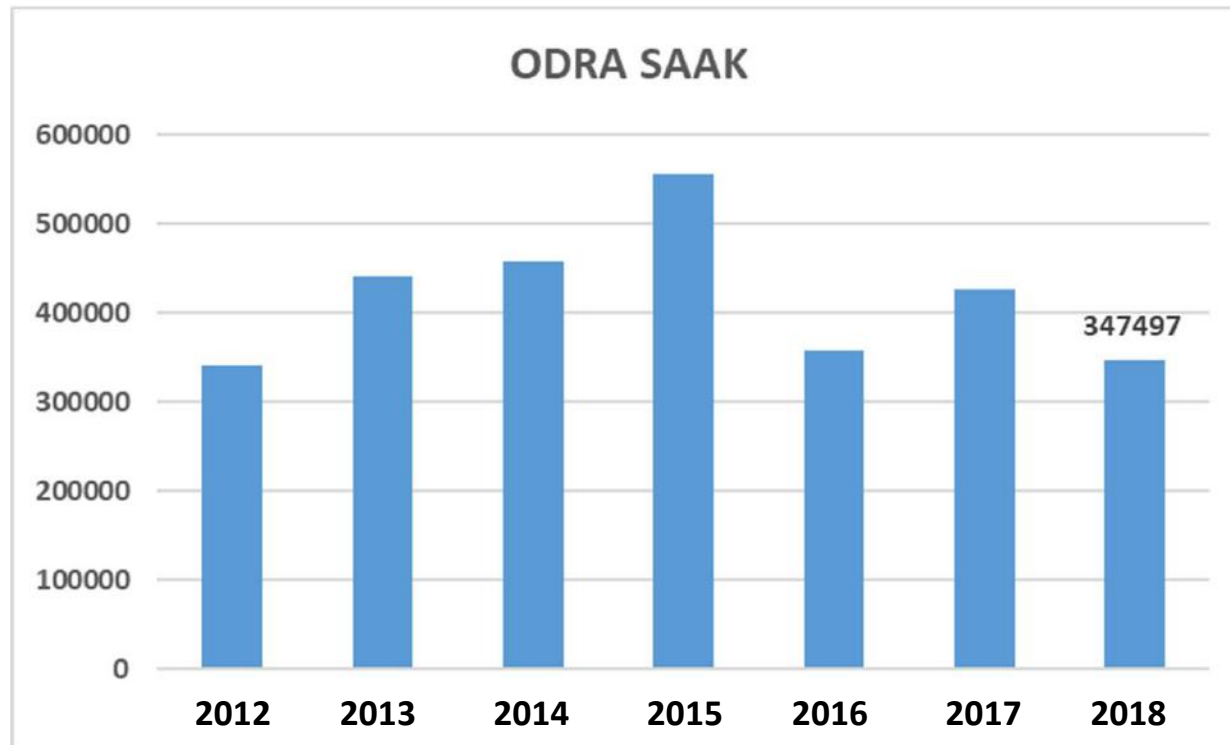
KVALITEET



*Cultivating Value*



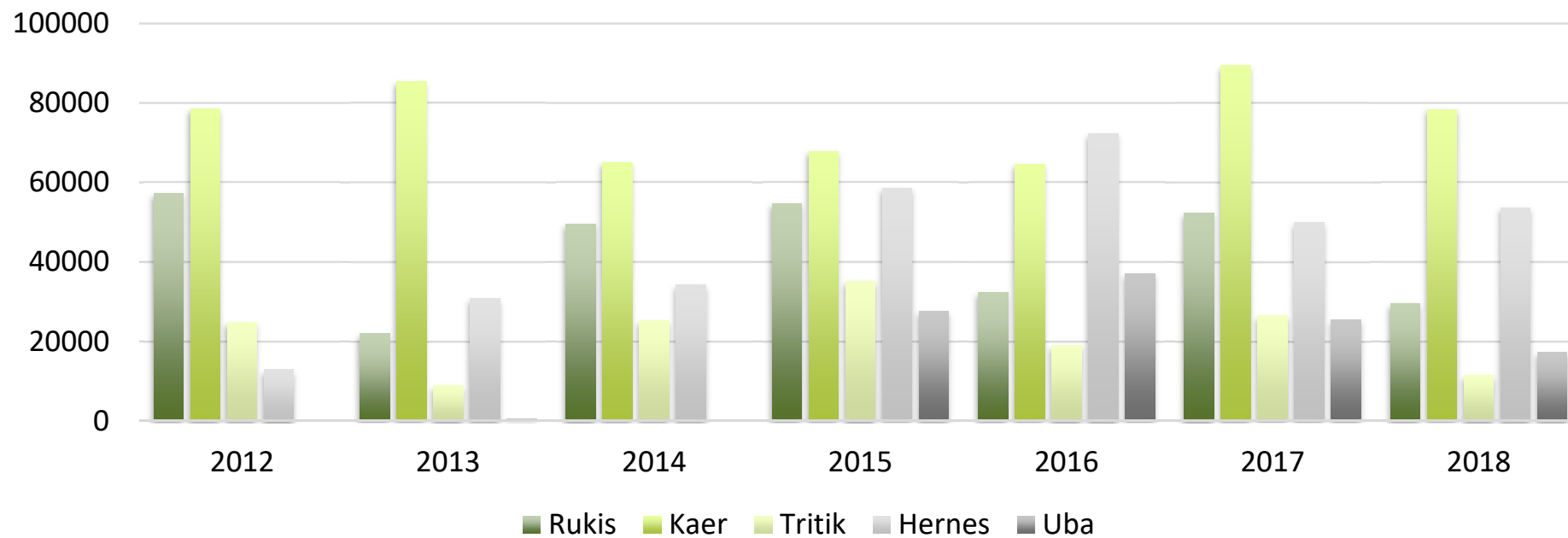
# ODER



*Cultivating Value*

# RUKIS KAER TRITIK HERNES UBA

## SAAK

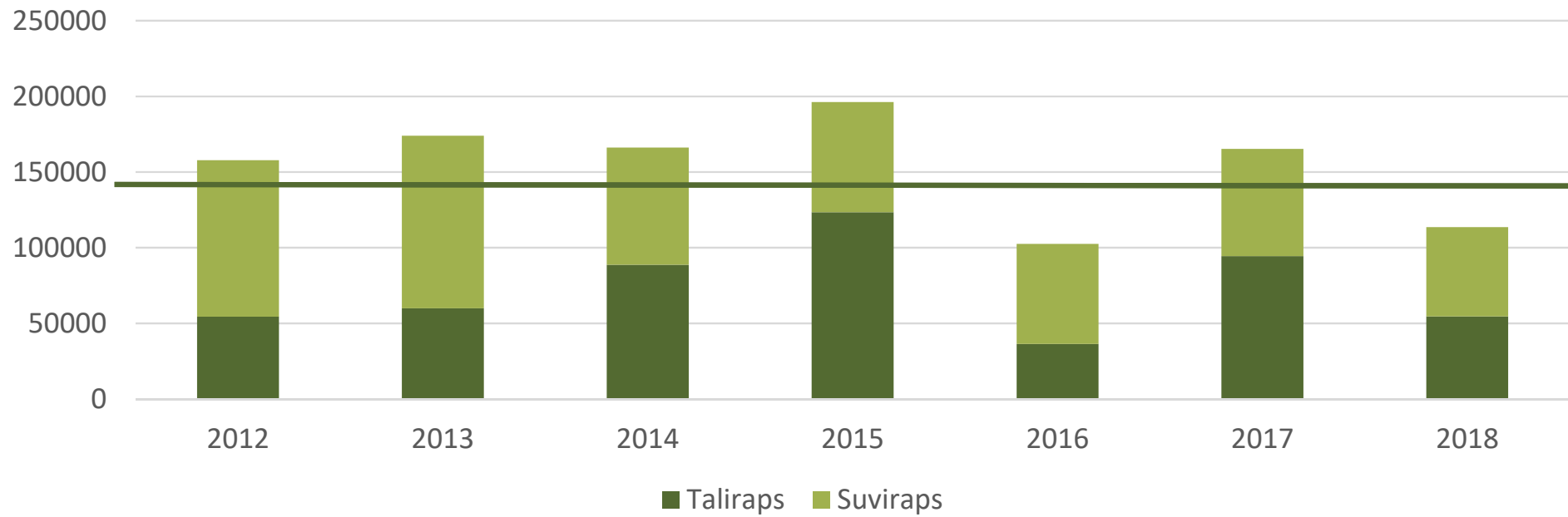


*Cultivating Value*



# RAPS

## SAAK



*Cultivating Value*



es, traffic and nearby places

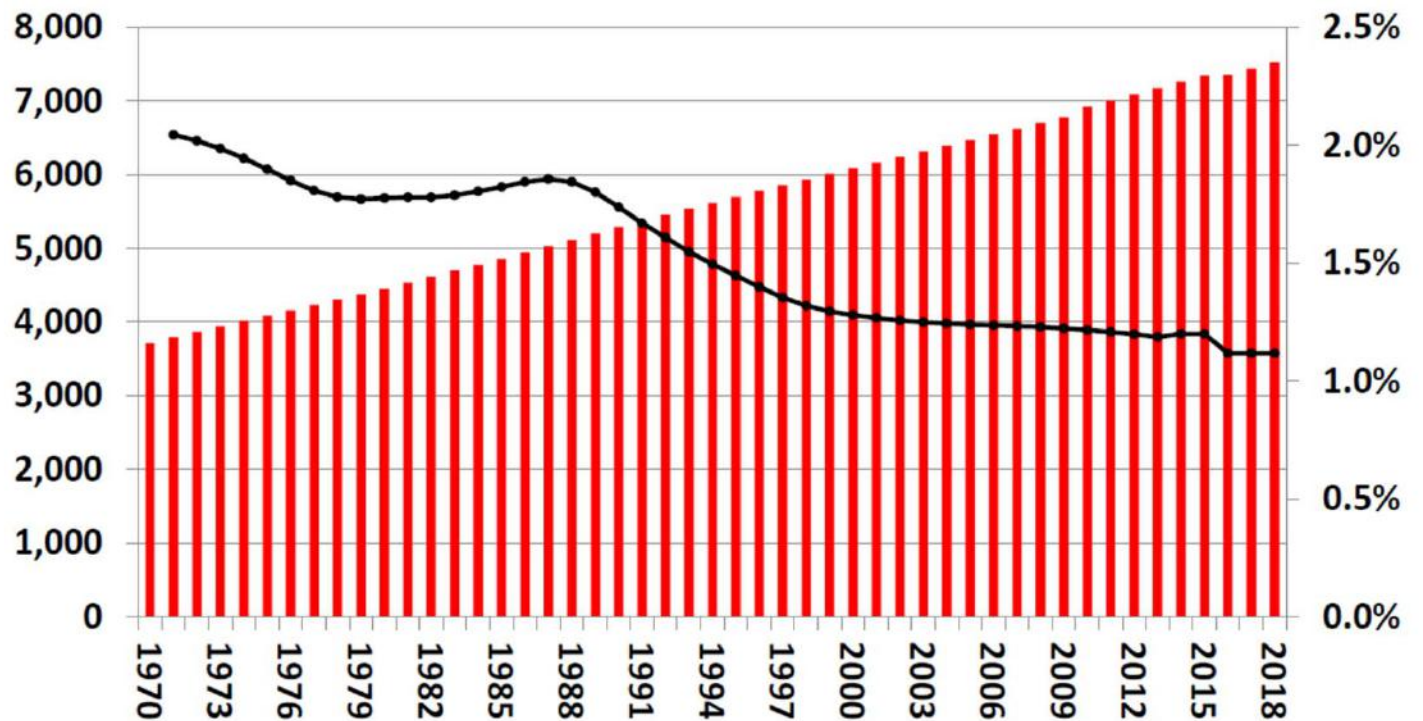


# MAAILM

RAHVASTIK 7,52 miljardit

Rahvastiku kasv aeglustub

Mil Persons



*Cultivating Value*

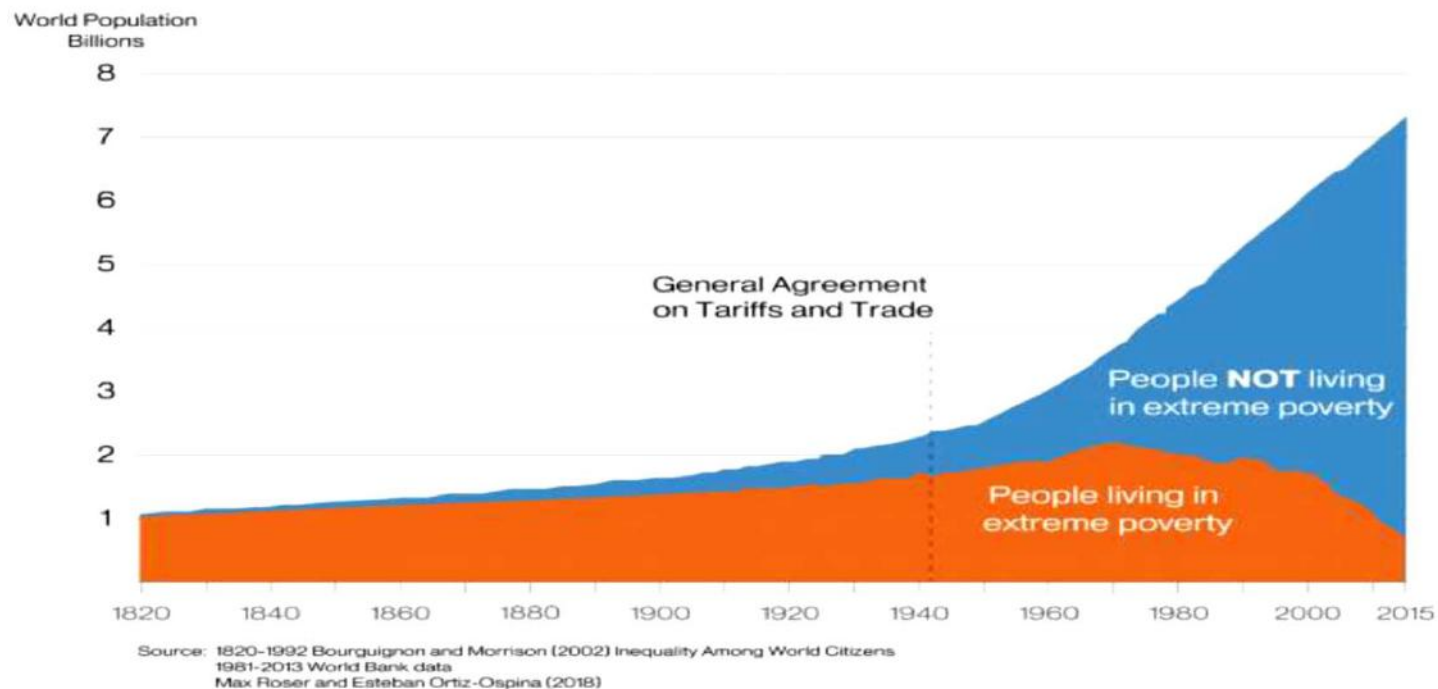




# VABAKAUBANDUS

## World Population Living in Extreme Poverty, 1820-2015

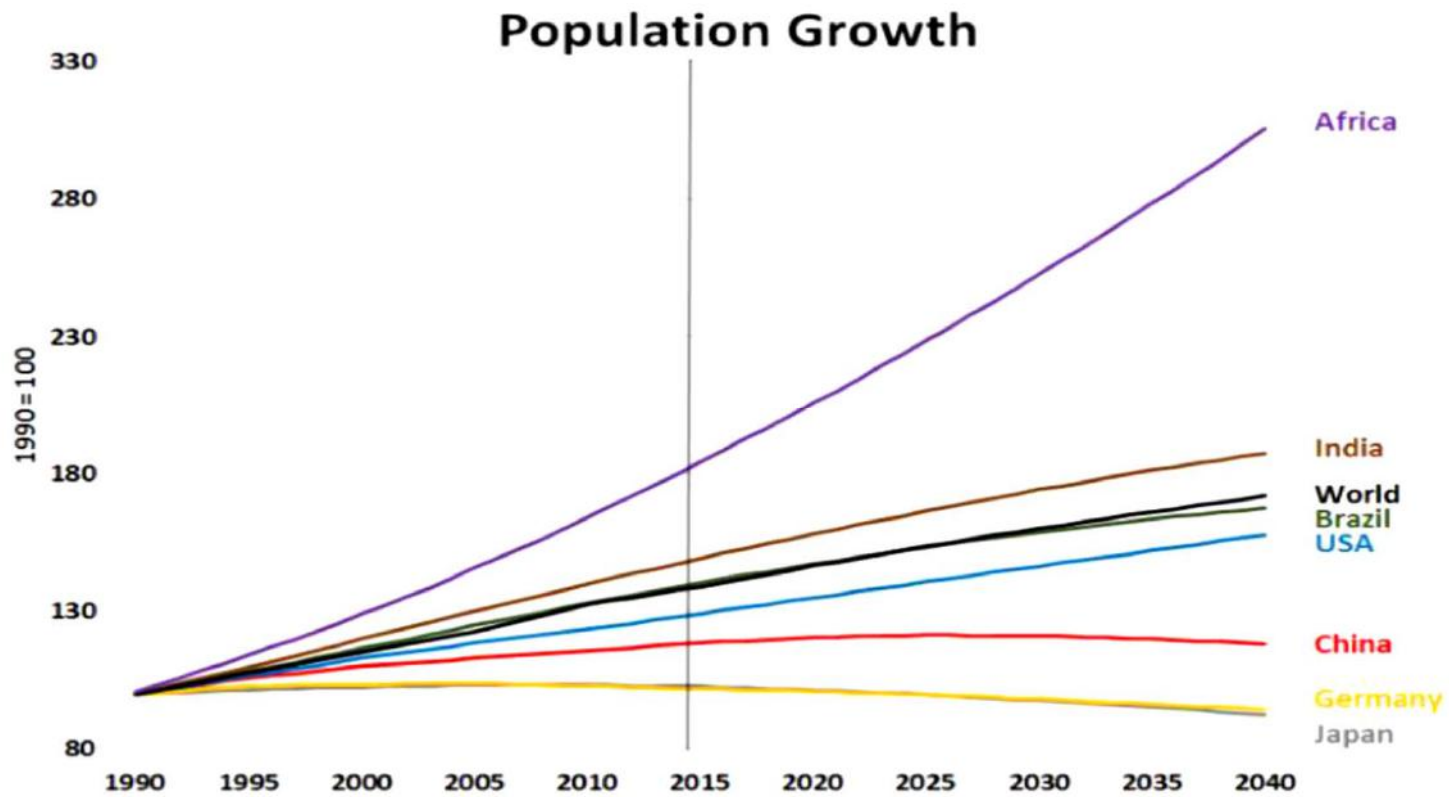
Extreme poverty is defined as living at a consumption (or income) level below 1.90 "international \$" per day. International dollars are adjusted for price differences between countries and for price changes over time (inflation).



*Cultivating Value*



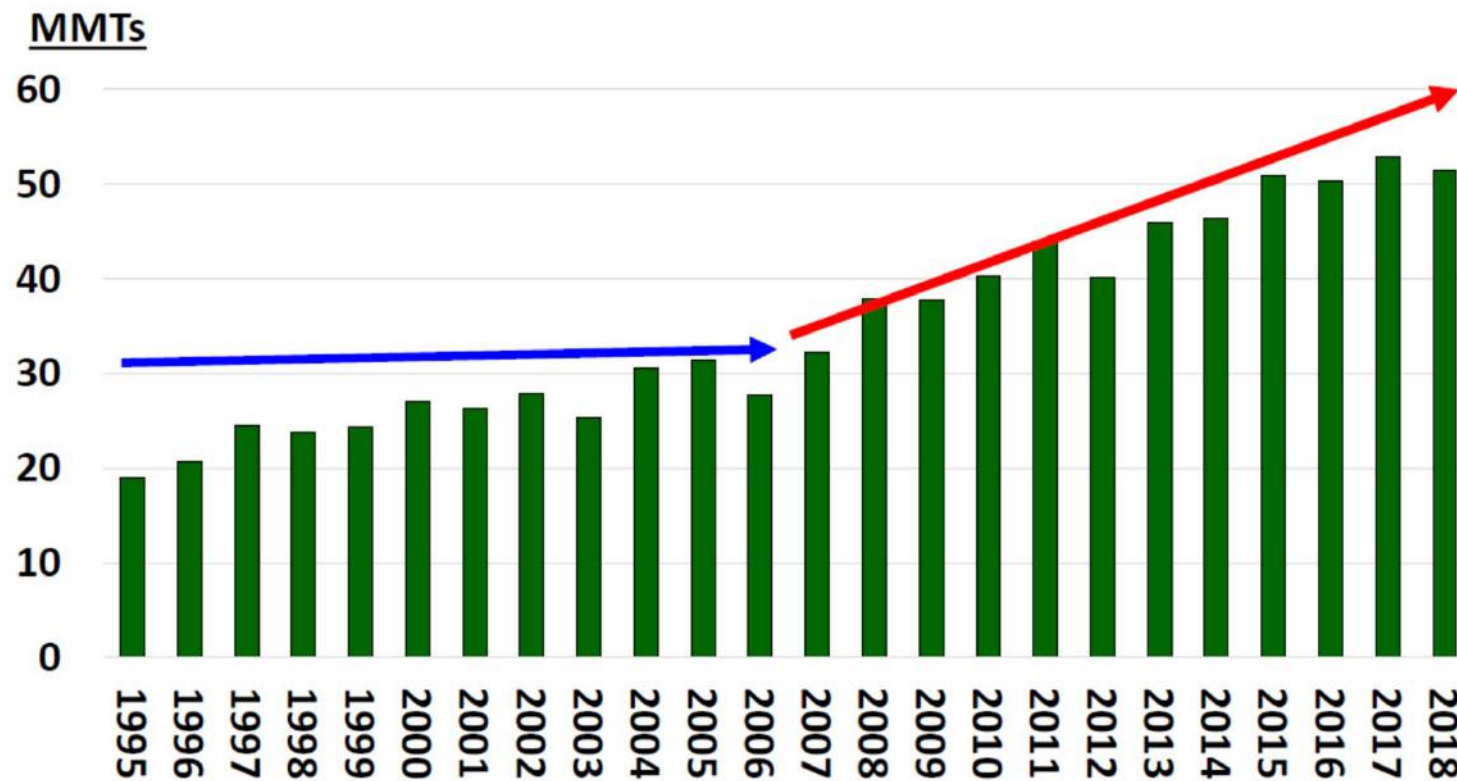
# MAAILM



*Cultivating Value*

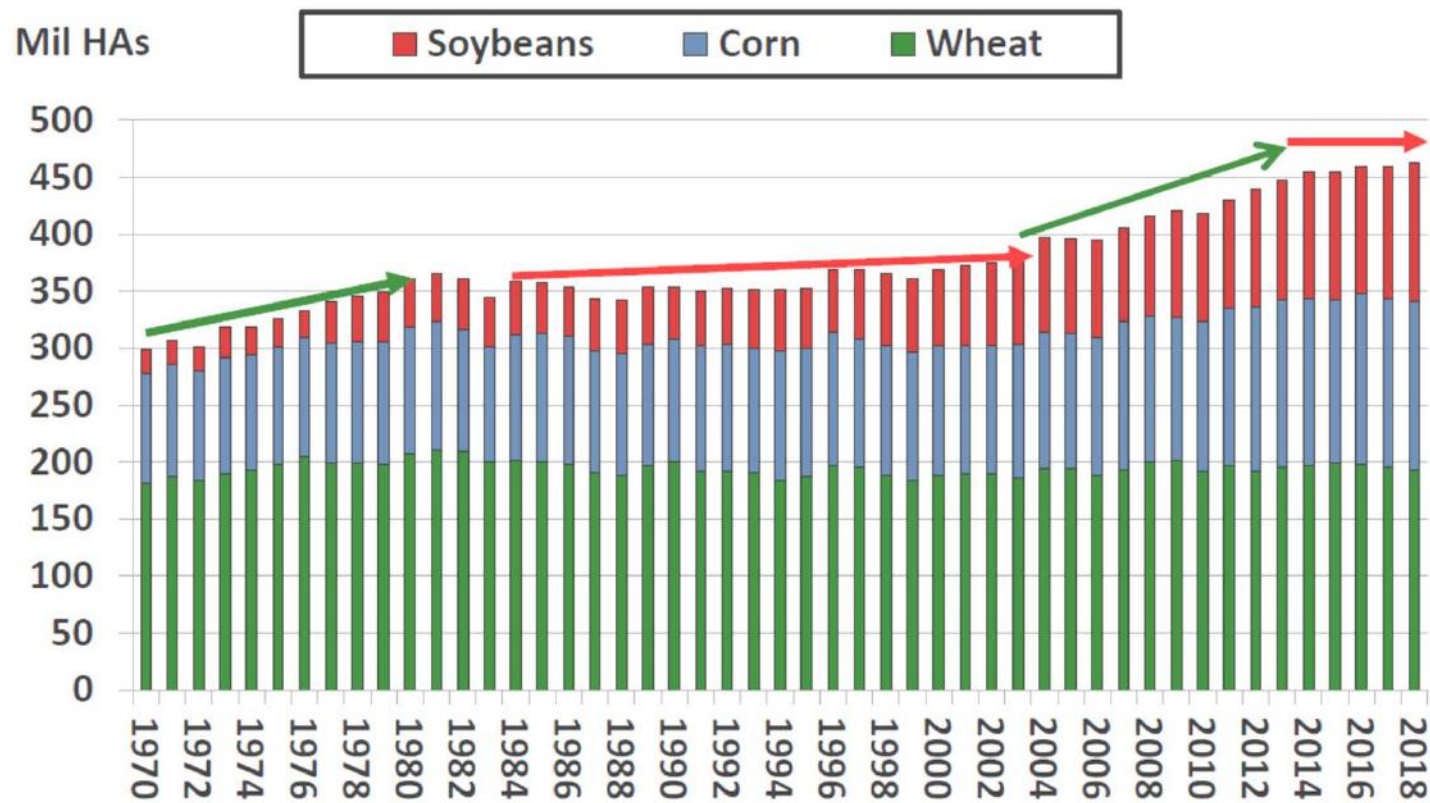


## AAFRIKA NISU IMPORT ALATES AASTAST 1995



*Cultivating Value*

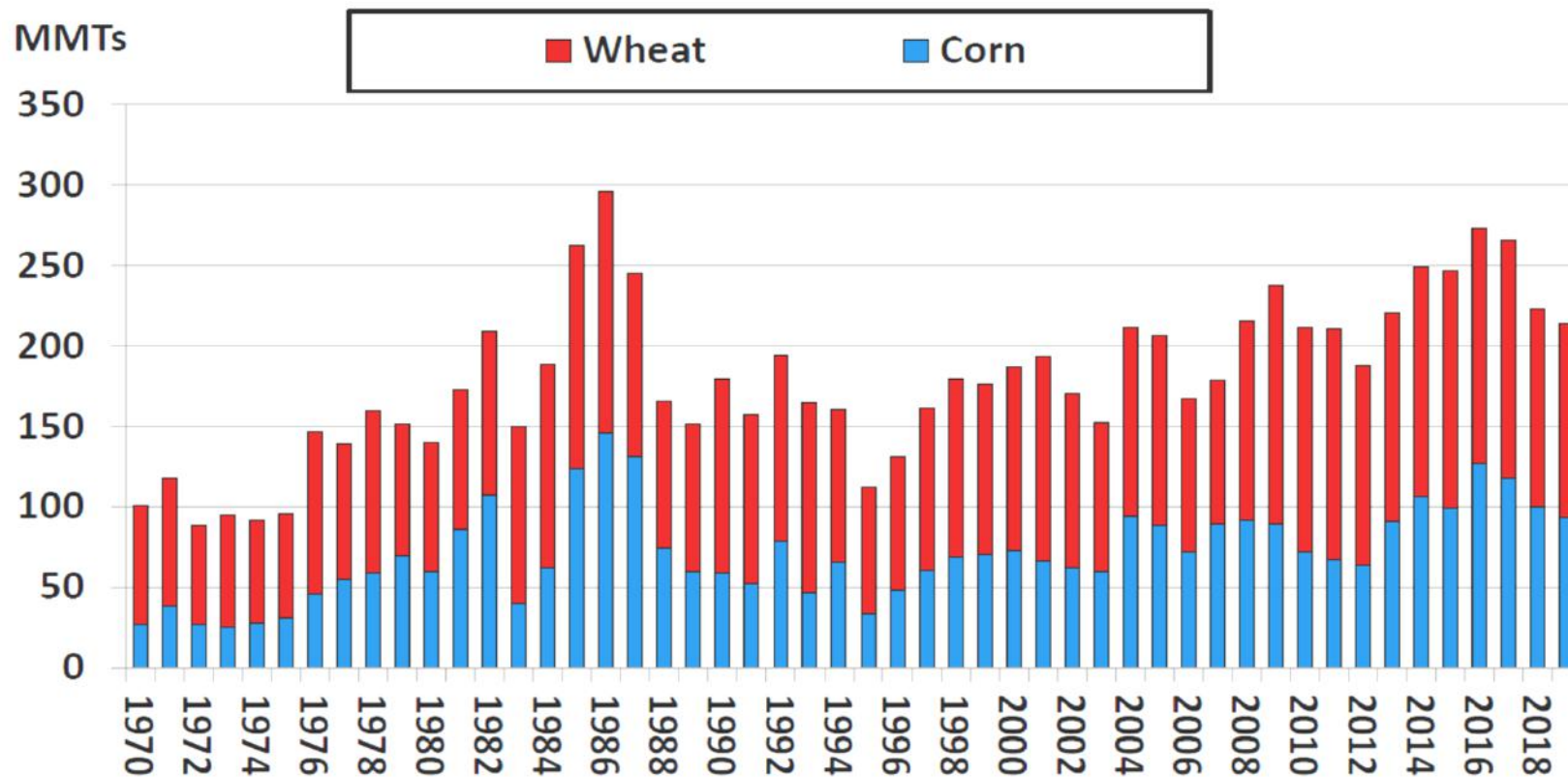
# KÜLVIPINNAD



*Cultivating Value*



# NISU + MAIS HOOAJALÕPU LAOSEISUD



*Cultivating Value*



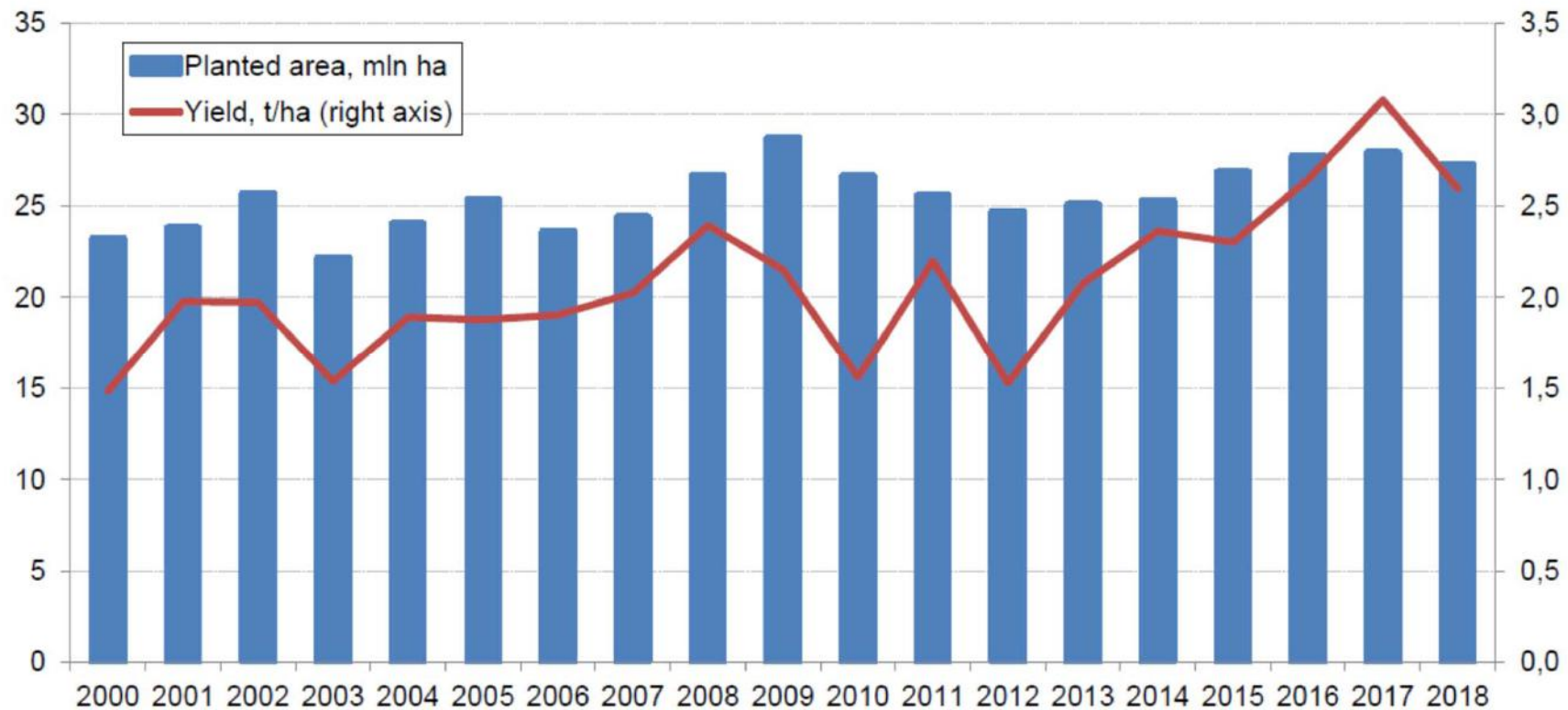
# VE NE NISU



*Cultivating Value*



## VENE NISU – PIND JA SAAGIKUS



*Cultivating Value*

# MATIF NISU 2018



*Cultivating Value*





# MATIF NISU 2014 - 2018

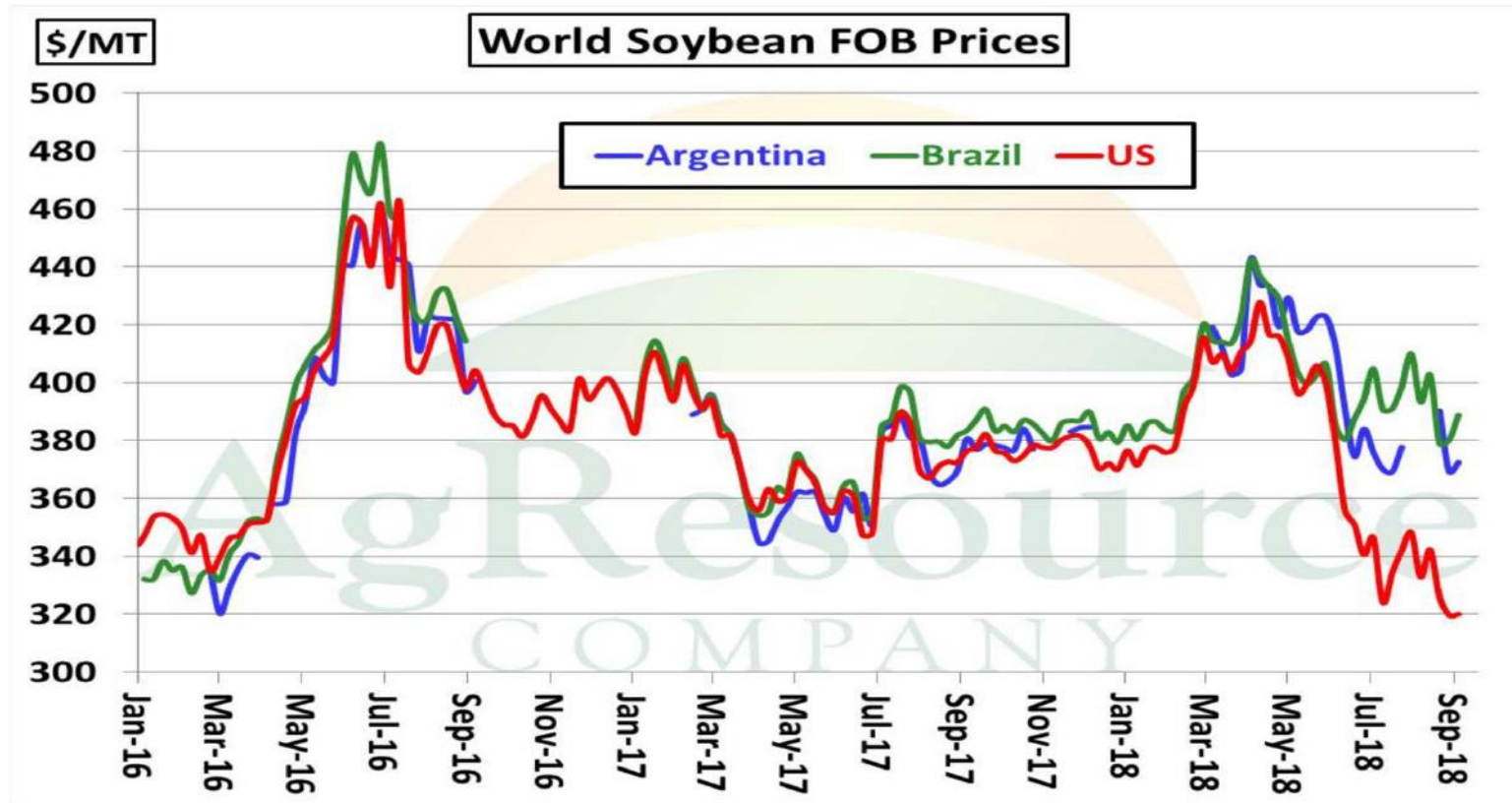


*Cultivating Value*





# SOJAUBADE FOB HINNAD



*Cultivating Value*

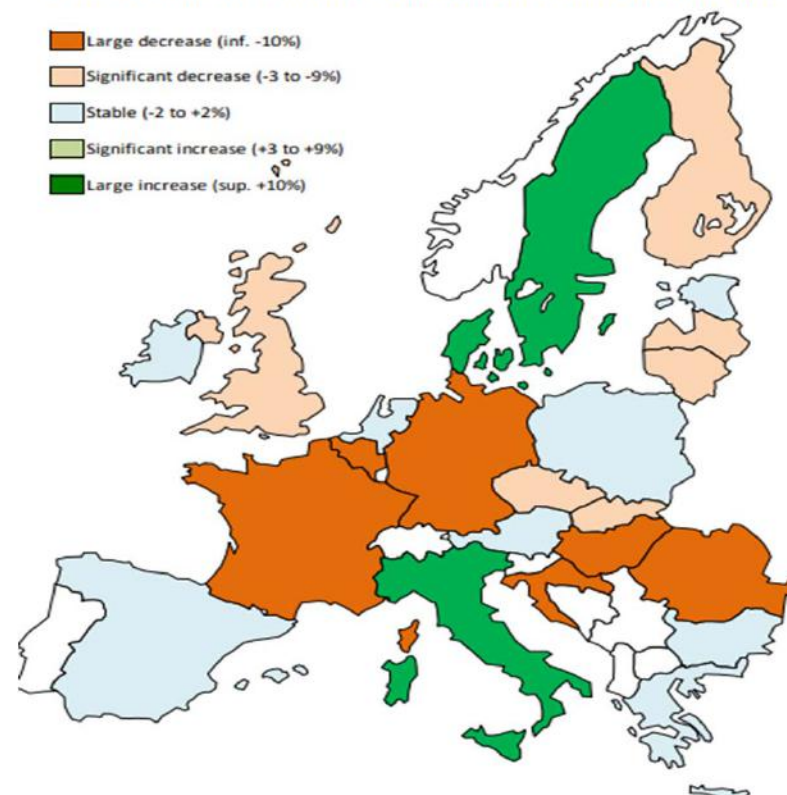


# RAPS

**1.4: RAPESEED PRODUCTION IN MAIN COUNTRIES**

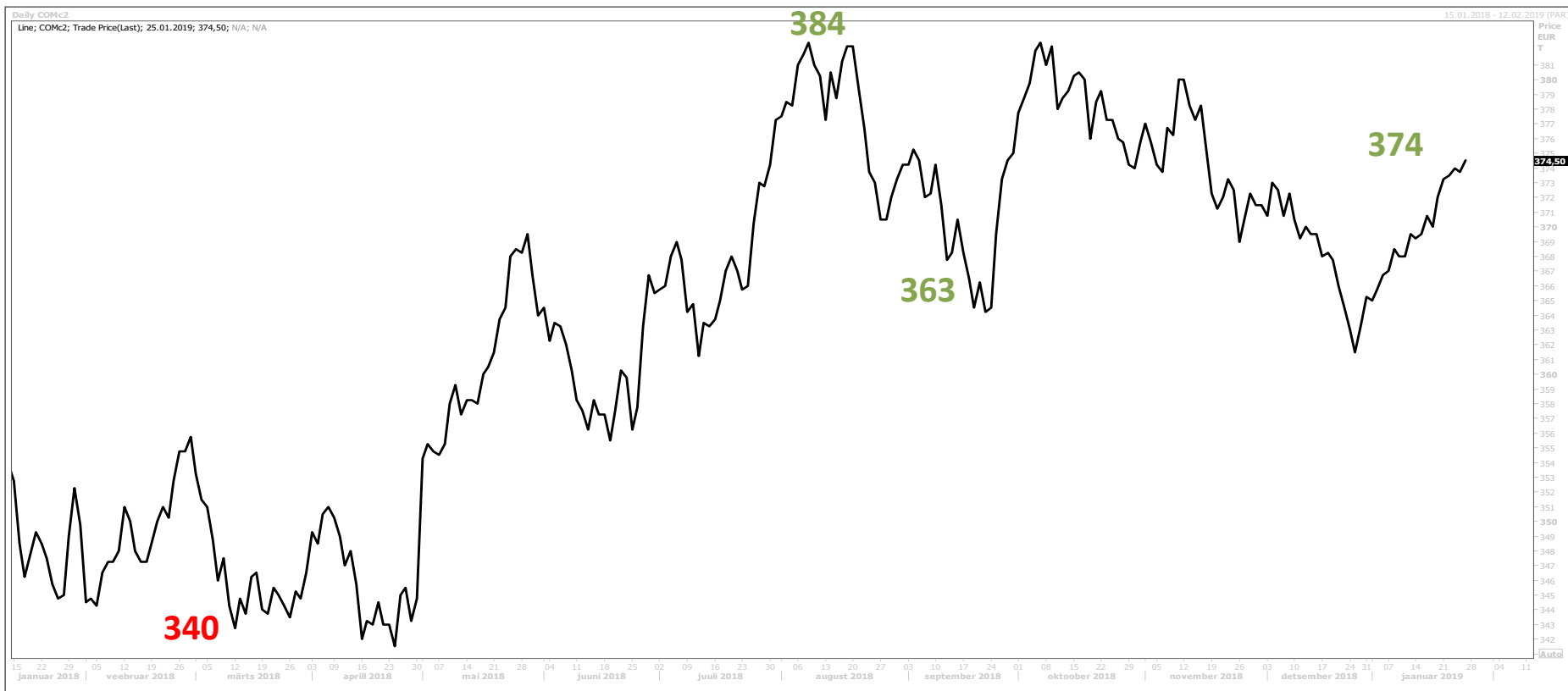
	Area (Mha)			Yield (t/ha)			Production (Mt)		
	2017/18	2018/19	Δ/ prev. report	2017/18	2018/19	Δ/ prev. report	2017/18	2018/19	Δ/ prev. report
Canada	9.29	9.13	0.00	2.35	2.36	0.00	21.81	21.55	0.00
China	7.00	6.93	1.08	2.00	1.92	0.17	14.00	13.30	3.09
EU 28	6.72	6.86	-0.01	3.30	2.89	0.00	22.20	19.83	0.00
India	5.76	6.05	-0.35	1.10	1.10	0.00	6.35	6.64	-0.38
Australia	2.73	1.77	-0.25	1.34	1.22	0.00	3.67	2.17	-0.30
Russia	0.95	1.47	0.04	1.58	1.30	0.00	1.50	1.90	0.05
Ukraine	0.79	1.01	0.00	2.91	2.65	0.00	2.31	2.67	0.00
USA	0.81	0.79	0.00	1.75	1.80	0.00	1.42	1.42	0.00
<b>World</b>	<b>35.58</b>	<b>35.57</b>	<b>0.52</b>	<b>2.12</b>	<b>2.01</b>	<b>0.04</b>	<b>75.50</b>	<b>71.63</b>	<b>2.46</b>

**1.1: EU28 RAPESEED ACREAGE VARIATION BETWEEN 2018 AND 2019**



Rapeseed (Mt)	2017/18		2018/19	
	25/10/18	29/11/18	25/10/18	29/11/18
July-June	25.10/18	29.11/18	25.10/18	29.11/18
carry-in stock	1.4	1.4	2.5	2.4
production	22.2	22.2	19.8	19.8
imports	4.1	4.1	4.2	4.3
domestic use	25.1	25.3	25.0	24.9
exports	0.1	0.1	0.1	0.0
<b>carry-out stock</b>	<b>2.5</b>	<b>2.4</b>	<b>1.5</b>	<b>1.6</b>
surplus / deficit	1.1	0.9	0.0	0.2

# MATIF RAPS 2018



*Cultivating Value*

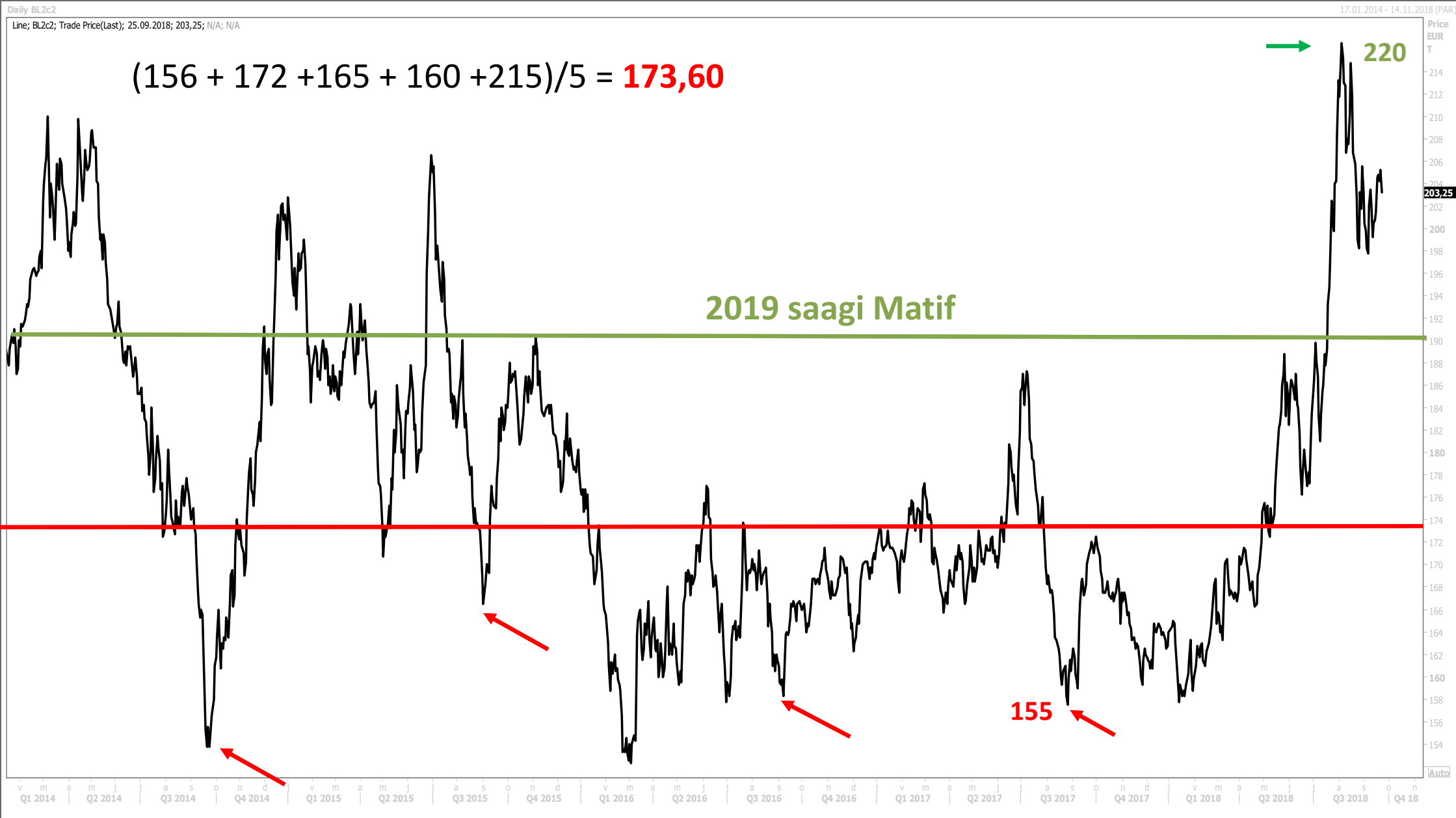


# MATIF RAPS 2014 - 2018



*Cultivating Value*







*Cultivating Value*